

# Speed-to-Power: How MISO is Accelerating Grid Interconnections

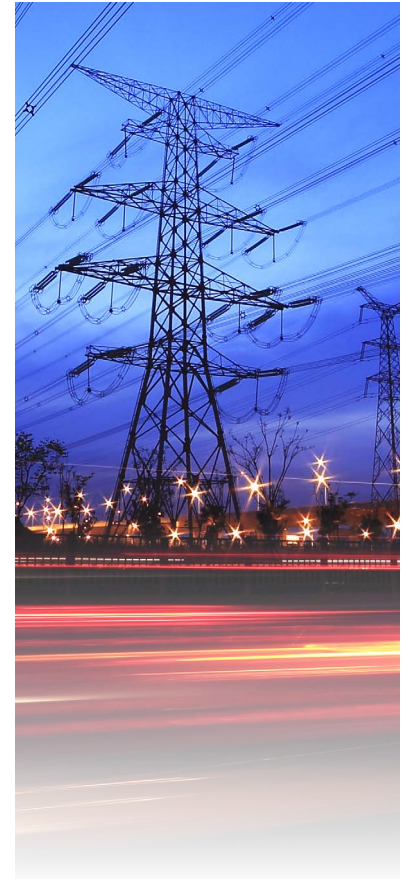


## STREAMLINING INTERCONNECTION TO SUPPORT GROWING POWER NEEDS

The MISO region is undergoing rapid change, with electric demand forecast to reach levels not seen in decades. At the same time, older power plants are retiring and a wave of new renewable energy and battery projects are trying to connect to the grid.

To help our members meet growing demand, MISO is accelerating the process for bringing new resources online—what we call “speed-to-power.”

- For projects needed quickly to maintain reliability, MISO now offers a **temporary expedited approval process**—ERAS—to connect critical resources sooner.
- New **automation tools** are speeding up studies, cutting early-stage review times from nearly 800 days to under 90.
- MISO has tightened requirements for projects entering the interconnection queue process to **limit speculative projects** that slow down progress for others. These improvements—including stronger financial commitments, clearer site-control standards, and a cap on applications—make the process more efficient and help viable projects move forward faster.
- Through Long Range Transmission Planning, MISO is **advancing the construction of new power lines** that will move future generation more efficiently. We’re also accelerating urgent upgrades through the Expedited Project Review process and coordinating projects along our western border through the Joint Targeted Interconnection Queue.



This work is paying off. Last year, MISO connected a record-breaking amount of new generation to our system.

Accredited  
Generation  
Added to  
System (GW)



Read the MISO Reliability Imperative report on [misoenergy.org](https://misoenergy.org)